



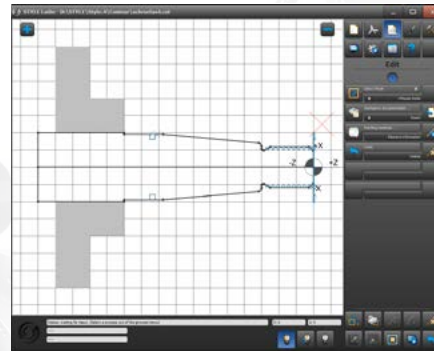
Slantbed lathe

The best lathe for the demanding specialist

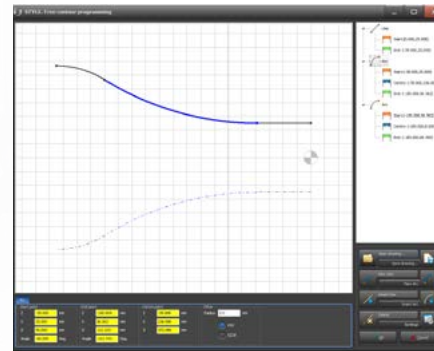
Machinebuilders since 1991

Slantbed lathe

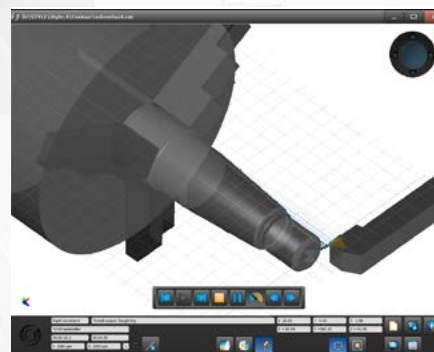
The best lathe for the demanding specialist



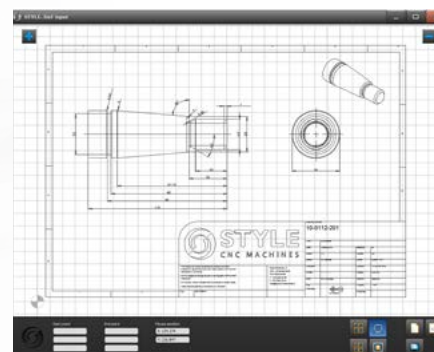
Easy and fast programming



Free contour drawing with a minimum of values



3D simulation for testing and time calculation



DxF import from CAD software



STYLE SB250



STYLE SB300



STYLE SB500

Easy, smart and simple programming

- Extensive CNC functionality
- 3D simulation program
- Graphic interface on 19" touchscreen
- DxF files import
- Free contour drawing with a minimum of values
- ISO G-codes import, edit and execute
- Easy to learn and use

- Shortcuts and key codes for faster working
- Execute of large G-code programs
- Program with an extensive intuitive control without any G-code knowledge
- Thread repair and prototyping
- Desktop preparation version
- Repeated output

The best lathe for the demanding specialist

- The ideal solution for a wide diversity of processes
- The optimal design frame and accurate movement confirm the right choice
- 45 degree frame from one single iron cast mold for high performance
- Design and build by true machine builders
- Dutch Design and production
- Wide aligned guides offer a steady support for the cross-slide
- Equipped with the easy STYLE Control
- Optional equipped with other control
- Modern CNC machine for productivity, flexibility and a easy control
- Designed for heavy and interrupted turning

Machinebuilders since 1991

STYLE SB250 - 500

Technical specifications

Machine		SB250	SB300	SB500
Maximum swing	mm	420	505	612
Swing over carriage cover	mm	330	318	420
Maximum turned diameter	mm	200	350	500
Maximum turned length	mm	550	570 / 1000	700 / 1200
Carriage inclination	°	45	45	45
Main spindle				
Spindle motor power (S6)	kW	11 / 15	11 / 15	15 / 18.5 (18.5 / 22)
Maximum spindle speed	rpm	6000 (4800)	4500 (6000 / 4000 / 3500)	3500 (2700 / 2500)
Spindle taper		A2-5 (A2-6)	A2-6 (A2-5 / A2-8 / A2-8)	A2-8 (A2-11 / A2-11)
Spindle bore	ø mm	56 (62)	62 (56 / 76 / 86)	86 (101 / 116)
Hole trough draw bar	ø mm	44 (52)	52 (44 / 65 / 75)	75 (90 / 105)
Hydraulic chuck diameter	ø mm	160 (200)	200 (160 / 250 / 250)	250 (300 / 380)
X- and Z-axis				
Rapid movement X / Z	m/min	12 / 20	20 / 20	20 / 24
Feed rate	m/min	10	10	10
X / Z axis slide way configuration		Linear	Linear / box	Box
Tailstock				
Quill	ø mm	75	75	85
Quill stroke	mm	100	80	120
Quill taper	MT	4	4	5
Turret system				
Tool change type		Servo	Servo / Hydraulic	Servo / Hydraulic
Type tool taper		BOT / VDI	BOT / VDI	BOT / VDI
Size		30	30 / 40	40
Number of tool stations	#	8 / 10	8 / 10 / 12	12
Turning tool shank dimensions	mm	20	20	25
Maximum boring bar diameter	ø mm	32	32	40
General				
Weight	kg	3800	4300 / 4800	5500 / 6000
Machine dimensions (l/b/h)	m	3.0 x 1.7 x 1.8 3.6 x 1.7 x 1.9	2.9 x 1.6 x 1.7 3.7 x 1.6 x 1.7	3.0 x 1.8 x 1.8 3.6 x 1.8 x 1.8

STYLE CNC Machines BV reserves the right to alter specifications without prior notice © 2016 STYLE CNC Machines BV



Service

Machines, control and maintenance. STYLE is a machine manufacturer from development to final product. With the STYLE manufacturer service you benefit of experienced engineers, an actual component stock and extensive training and helpdesk support on your machine.

By our subsidiaries and dealernetwork you receive support in your own language, certified technical support and custom training when required.



Subsidiaries

STYLE CNC Machines	Bunschoten	Holland
Dimatech	Varsseveld	Holland
STYLE CNC Machines BE	Waregem	Belgium
STYLE CNC Machines CZ	Stanovice	Czech Republic & Slovakia
STYLE CNC Machines PL	Katowice	Poland



Slantbed SB series
The best lathe for the demanding specialist



Machine center MC series
The best mill for the demanding specialist

Correspondence
PO box 136
3750 GC Bunschoten
Holland

Production and showroom
Nijverheidsweg 15
3751 LP Bunschoten
Holland

T +31 33 - 205 25 00
E info@stylecncmachines.com
I www.stylecncmachines.com